

NATURAL
ENGLAND

NO OPEN ACCESS

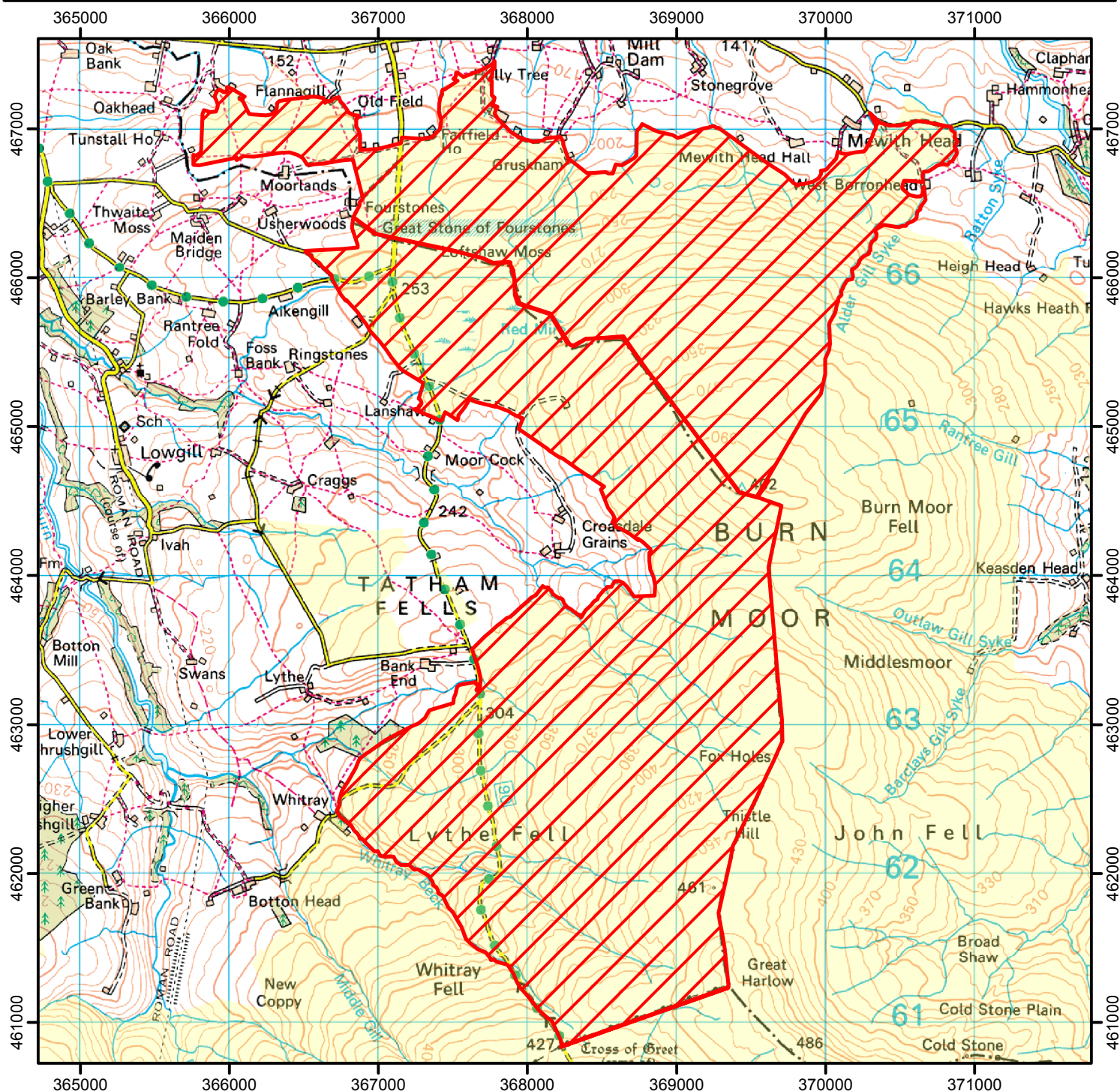
The open access land shown hatched on the map below is temporarily closed at the land manager's discretion.

This does not affect Public Rights of Way

Closed 2019 : May 7th - 10th, 13th - 17th, 20th - 24th and
29th - 31st

June 3rd - 7th and 10th - 14th

Case Number: 2019048892



0 1,250 2,500 M

© Crown Copyright and database right 2019.
Ordnance Survey 100022021



Restricted Open Access Land



Open Access Land



For more information call the Open Access Contact Centre on 0300 060 2091
or visit our website at www.gov.uk/right-of-way-open-access-land/use-your-right-to-roam