

NATURAL  
ENGLAND

# NO OPEN ACCESS

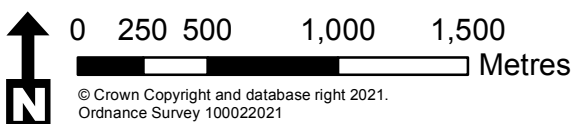
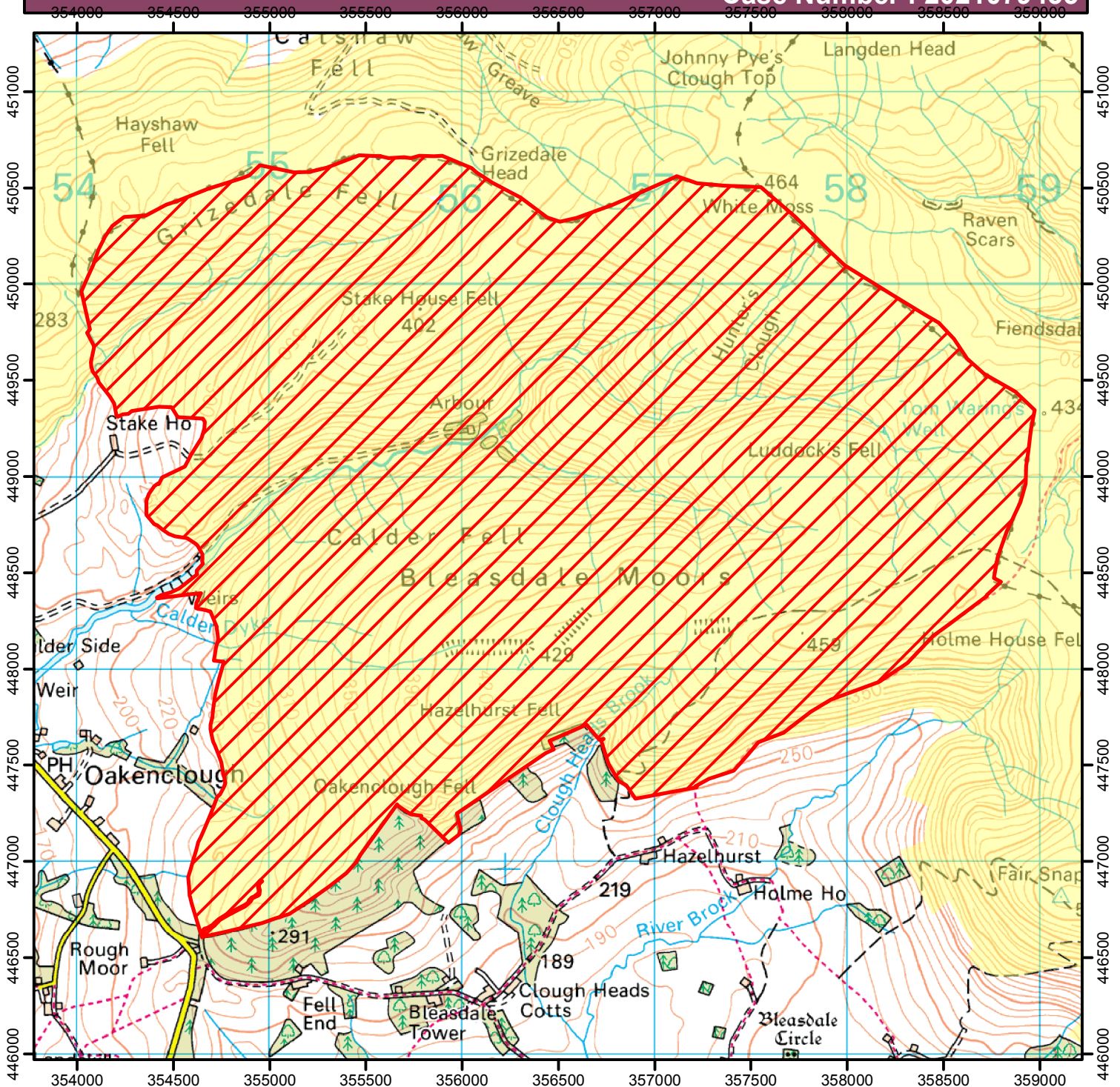
The open access land shown hatched on the map below is temporarily closed at the land manager's discretion. This does not affect Public Rights of Way.



Closed 2021 August 12, 16, 27

September 3, 6, 10, 17, 27, 28

October 1, 8

Case Number : 2021079455



 Restricted Open Access Land  
 Open Access Land



For more information call the Open Access Contact Centre on 0300 060 2091  
or visit our website at [www.gov.uk/right-of-way-open-access-land/use-your-right-to-roam](http://www.gov.uk/right-of-way-open-access-land/use-your-right-to-roam)