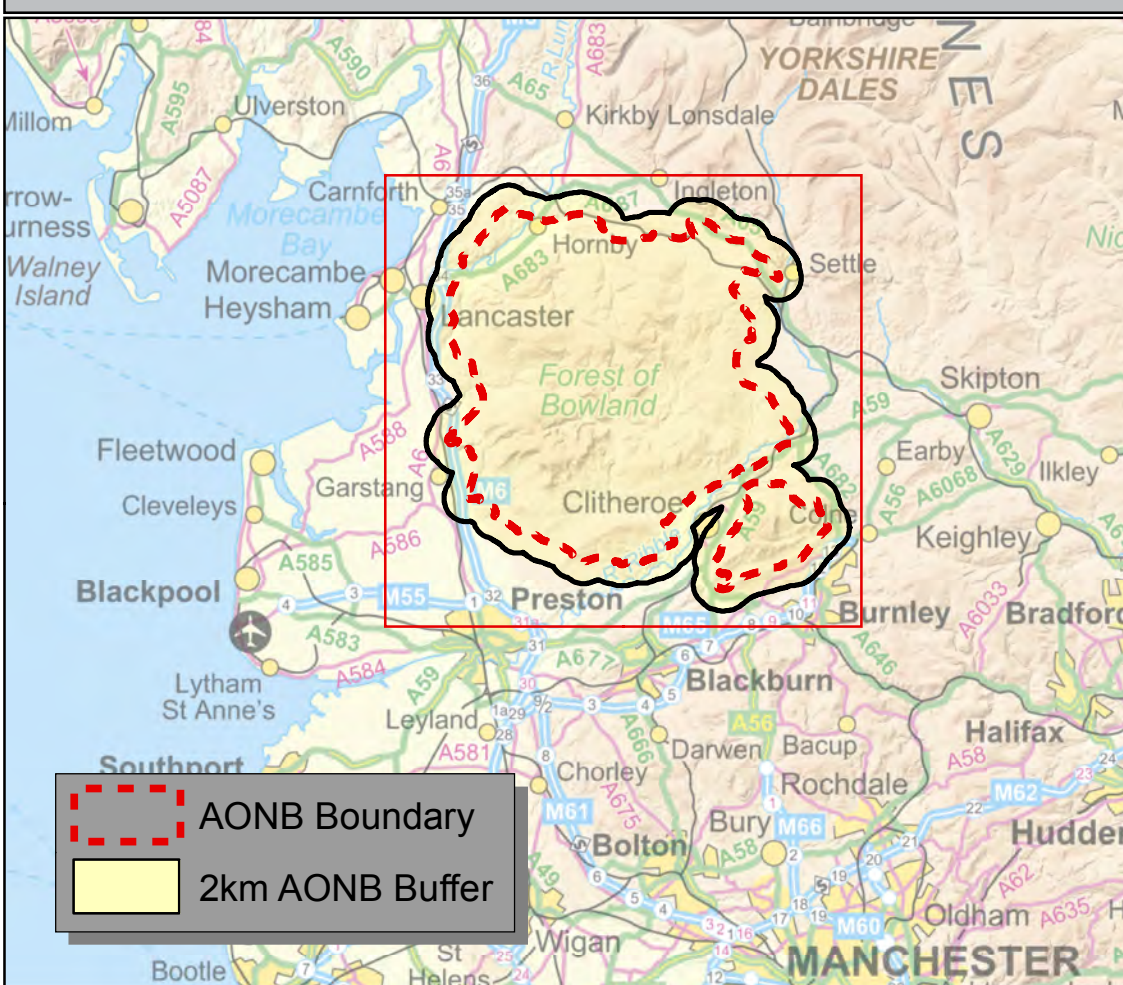


# AONB Pubs, Cafes, Restaurants & Visitor Attractions

## Lancashire Overview Map



## Map Key:

<span style="color: red;">●</span> Pubs	<span style="color: blue;">●</span> Cafe \ Restaurant	<span style="color: green;">●</span> Visitor Attraction
<ul style="list-style-type: none"> <li>3 The Dog</li> <li>4 The Eagle</li> <li>12 Black Bull</li> <li>15 The Ship</li> <li>17 The Station</li> <li>18 Black Bull</li> <li>23 Sun</li> <li>24 Tillotsons</li> <li>29 Assheton Arms</li> <li>33 Fence Inn</li> <li>35 Duke of York</li> <li>36 Buck Inn</li> <li>37 Dog &amp; Partridge</li> <li>38 Black Bull</li> <li>39 Horse &amp; Farrier</li> <li>41 Royal Oak</li> <li>44 Eagle &amp; Child</li> <li>45 The Greenman</li> <li>46 Punchbowl</li> <li>47 Three Fishes</li> <li>48 Aspal Arms</li> <li>51 The Buck</li> <li>52 Swan with 2 necks</li> <li>53 Black Bull</li> <li>56 New Drop</li> <li>58 Ribchester Arms</li> <li>60 Spread Eagle</li> <li>66 Derby Arms</li> <li>70 Higher Buck</li> <li>71 The Bridge</li> <li>72 3 Millstones</li> <li>73 De Lacys</li> <li>74 Whalley Arms</li> <li>76 The Dog</li> <li>77 Freemasons Arms</li> <li>80 The Plough</li> <li>81 Inn at Wray</li> <li>81 George &amp; Dragon</li> <li>101 Lower Buck</li> <li>109 Parkers Arms</li> <li>110 Bay Horse Inn</li> <li>111 White Hart</li> <li>112 Pendle Witch</li> <li>115 Crowtrees Inn</li> </ul>	<ul style="list-style-type: none"> <li>2 Cobble Hey</li> <li>5 Great Land</li> <li>7 Bashall Barn</li> <li>8 Bowland Visitor Centre</li> <li>9 Gardenmakers</li> <li>11 Post Office</li> <li>13 Old Holly</li> <li>19 Shackletons</li> <li>20 Brabins Shop &amp; Gallery</li> <li>22 Cobbled Corner</li> <li>25 Wild Boar Park</li> <li>27 Castle &amp; Museum</li> <li>30 Post Office tearooms</li> <li>31 Greendale</li> <li>32 Puddleducks</li> <li>40 Nosebag</li> <li>49 Hillcrest</li> <li>50 Witches Galore</li> <li>54 Carmen Rose</li> <li>57 Angels restaurant</li> <li>61 The Barn</li> <li>64 Stocks Fly Fishery</li> <li>67 Little Town Dairy</li> <li>68 Backridge Farm</li> <li>69 Country Café</li> <li>75 Food by Breda Murphy</li> <li>79 Bridge House</li> <li>93 Tearooms</li> <li>94 The Institute</li> <li>97 Pye Nanny Nursery</li> <li>103 Barley Mow</li> <li>104 Car Park Cafe</li> <li>105 Lime Tree Deli</li> <li>106 Old Cottage</li> <li>107 La Laconda</li> <li>108 Strawberry Fields</li> <li>114 Riverside</li> <li>116 Dovecote</li> </ul>	<ul style="list-style-type: none"> <li>1 Redwell Fisheries</li> <li>2 Cobble Hey</li> <li>6 Bowland Brewery</li> <li>7 Bashall Barn</li> <li>8 Bowland Visitor Centre</li> <li>9 Gardenmakers</li> <li>10 Holden Clough Nursery</li> <li>14 Bank House Fly Fishery</li> <li>16 Gregarth Hall</li> <li>20 Brabins Shop &amp; Gallery</li> <li>21 Bowland Forest Gliding Club</li> <li>25 Wild Boar Park</li> <li>26 Ribble Valley Sculpture Trail</li> <li>27 Castle &amp; Museum</li> <li>28 Browsholme Hall</li> <li>34 Forrest Hills</li> <li>42 Rural Footprints</li> <li>43 Stonyhurst College</li> <li>55 Roman Museum</li> <li>59 Roughlee Trout Fishery</li> <li>62 Wyreside Lakes</li> <li>63 Off the Rails</li> <li>64 Stocks Fly Fishery</li> <li>65 Clearbeck Arts Garden</li> <li>67 Little Town Dairy</li> <li>68 Backridge Farm</li> <li>82 Cliftons farm</li> <li>83 Cycle Adventure</li> <li>87 Game Format</li> <li>89 Green Close Studios</li> <li>91 Greenhall Farm Riding centre</li> <li>92 HJ Berry</li> <li>95 Lower Gazegill Farm</li> <li>96 Pedal Power</li> <li>97 Pye Nanny Nursery</li> <li>98 Village Hall</li> <li>100 Maiden Bridge Gallery</li> <li>102 Jubilee Tower</li> <li>113 Sawley Abbey</li> </ul>

O AONB area = 800 sq km  
 O AONB area + 2 km buffer = 1139 sq km  
 Addresses mapped to postcode centroid  
 This Map is reproduced from Ordnance Survey material with the permission of Ordnance Survey on behalf of the controller of Her Majesty's Stationery Office (C) Crown Copyright. Unauthorised reproduction infringes Crown Copyright and may lead to Prosecution or civil proceedings. Lancashire County Council Licence No. 100023320. Map produced by Environment ICT.



AONB Boundary  
2km AONB Buffer