



### **In this issue:**

Bowland Festival success • Businesses go green • Free training

# Welcome

Dear Readers,

It has been an exciting and busy time for the AONB Unit, partners and businesses with preparations for the annual Bowland Festival, which took place in June. It was a great success and we were even lucky to enjoy that rare sight - the sunshine! Read on to find out more about the events that took place.

Many tourism businesses have now made a commitment to our Sustainable Tourism Network and a significant number have joined the Green Tourism Business accreditation Scheme. It is exciting to see businesses across Bowland active in developing their green credentials and we encourage those who are not yet part of the Network to come and join!

Communities continue to be enthusiastic about getting involved with the many village developments that have taken place over recent months. It is also refreshing to see that some of these projects are now benefiting from our own Bowland Tourism Environment Fund, which is made possible by generous donations from businesses and visitors to the area.

In this edition we are pleased to offer a programme of free training. This is based upon your requests for training in our recent survey, so please take the opportunity to participate in some very useful workshops across a variety of topics. If there are other areas where you would like support please call us and we will try to find you alternative courses.

If you are interested in getting involved with any of the projects detailed please get in touch. Thank you for your support.

Best wishes,

Hetty Byrne

## Contents

Bowland Festival	3
Community News	4
Business News	6
Bowland in Focus	8

## Contact details

Cathy Hopley, Communities & Funding Officer  
[cathy.hopley@env.lancsc.gov.uk](mailto:cathy.hopley@env.lancsc.gov.uk)

Martin Charlesworth, Community Projects Officer  
[martin.charlesworth@env.lancsc.gov.uk](mailto:martin.charlesworth@env.lancsc.gov.uk)

Hetty Byrne, Information Officer  
[hetty.byrne@env.lancsc.gov.uk](mailto:hetty.byrne@env.lancsc.gov.uk)

Mike Pugh, Business Development Officer  
[mike.pugh@env.lancsc.gov.uk](mailto:mike.pugh@env.lancsc.gov.uk)

c/o Lancashire Rural Futures  
1st Floor Waterloo Mill  
Waterloo Road  
Clitheroe  
BB7 1LR

Tel: 01200 426433  
Fax: 01200 426409



This project is supported by the Forest of Bowland Area of Outstanding Natural Beauty (AONB), and has received funding from the following organisations



# Bowland Festival



Radio tracking Hen Harriers



Cheese making demonstration with Bob Kitching

## Bowland Festival success!

Hen harriers were the star attraction at this year's Bowland Festival, held to celebrate the wildlife, landscape, heritage and rural life of the Forest of Bowland Area of Outstanding Natural Beauty, from 2-17 June.

Hundreds of people from across the UK flocked to the area to see this enigmatic bird of prey - one of the country's rarest breeders - in its moorland habitat, soaring low over the heather hunting for food to feed its chicks.

RSPB event leader Pete Wilson said: "We were lucky enough to see many of the species which make Bowland such a special place for wildlife. Hen harriers are active at this time of year feeding their chicks, and we also caught glimpses of other special moorland birds such as ring ouzels, whinchats and curlews."

This was the fifth annual festival, with a large selection of events and activities. From brewery tours to badger encounters and cheese making to ceramic tile making, participants discovered the area's exceptional birds and wildlife, explored its heritage, enjoyed its landscape and sampled its delicious food and drink.

Promoting and supporting sustainable tourism is an important aim of the Bowland Festival. By encouraging participants to use local accommodation and services, the Bowland Festival helps to boost tourism businesses and the local economy every year.

## Bowland in summer:

It is beautiful time of year (despite the rain) with an abundance of wildflowers along the lanes and hedgerows.

Things to look out for:

- Birds of prey - the kestrel, sparrowhawk, hen harrier and peregrine falcon
- Curlews on Waddington and Easington fells - also oystercatchers, redshank, buzzards and grouse
- Late summer - the heather comes into flower and there are bilberries to pick
- Stonechats and whinchats in the Trough of Bowland

Bowland ceramic tile making



What a view!



# Community News



Roughlee - best kept village 2006



New stocks at Bolton-by-Bowland



Chipping and Leagram war memorial

It has been an active few months among communities, with keen volunteers contributing towards significant improvements to our Bowland villages - even the poor weather hasn't put them off (yet)!

## Picture-postcard Roughlee

Roughlee, best-kept village of 2006, has transformed a neglected corner into a picture postcard scene. Every year, the Parish Council targets an area and sorts it out! Minutes after this photo was taken a new bench was installed to complete the picture.

## Young farmers give a helping hand

Chipping and Leagram parish councils are proud of their war memorial that stands just on the boundary between their parishes. However, the posts and chains had become corroded, the front wall was black with dirt and the hedge at the back was in need of attention. They got promises of money from a dozen different sources and have recently completed a major project to renovate and remodel the area. A seat built into the new rear wall of the garden will allow people to stay awhile and admire the scenery. Young farmers cleaned the front wall when they were unable to get to school one day - well done!

## Interpreting the beautiful scenery

There's some wonderful scenery around Eldroth and interpretation boards for a circular walk between the village hall and the Dalesbridge centre are being prepared. We're

hoping to get a contribution from the National Grid who have been laying the pipeline around that area. This has caused much disruption and it would be good if the villagers receive something back in return for their patience.

## Painting enthusiasts

Wennington has some very pleasant green areas and several seats that should allow people to wait for buses, trains or just sit and admire the views. Unfortunately the wooden seats have rotted over the years and some have been removed altogether for safety's sake. The villagers are just waiting for the rain to stop before completing the installation of new benches. They have however, repainted the railings by the side of the road. Next time you drive through, please stop and admire the work.

We have stocks of white paint just waiting for volunteers to apply it to rusty railings. There is also the possibility that there may be some money available to pay for some labour - we will keep you updated. Please get in touch with Martin Charlesworth if you are at all interested in making use of the paint, otherwise it is going to Chipping! Since paint was given to Anne Fletcher in Chipping it has done nothing but rain - apologies!

## Improvements in beautiful Bolton-by-Bowland

Have you noticed the new stocks in Bolton-by-Bowland? They look wonderful. The information room is about to be revamped with new paint, tiles produced by local children and some panels showing the local area. The spiders will have to find a new home.



Competition winner, James Moorcroft



BTCV volunteers, Cobble Hey Farm

## A day in the life

Blue skies were ordered for June 20th, when Bentham held 'A day in the life of Bentham and it's people' - a photographic competition. This unique event has resulted in a fascinating and amusing collection of photographs taken on that day. An exhibition of the entries will be on display throughout August in Bentham Gallery. Catch it if you can.

## The Bowland Tourism Environment Fund

Have you seen the collection boxes with postcards and Forest of Bowland pin badges in tourism businesses and visitor attractions throughout Bowland? Or perhaps you contributed at a Bowland Festival event? These donations and contributions all go towards the Bowland Tourism Environment Fund (BTEF), which supports community and environmental projects in the area. There are now 82 outlets from gift shops to pubs across and around the AONB providing the opportunity for visitors to contribute to the fund. The current 'special offer' is a prize draw for a midweek stay at the Inn at Whitewell, which will be drawn in January 2008.

## Barley village hall

Just over 12 months ago Barley village had a complete makeover of their village hall. It now has solar panels, heat pumps and some delightful rooms that are very much appreciated by the local community. Volunteers have been energised by this and have continued their good work by landscaping the front of the hall, repairing the crumbling steps, replacing a couple of stone balls, sandblasting the

stonework and painting the railings. And to finish off they thought they should motivate the rest of Barley to enter the best-kept village competition with help from the BTEF. David Weatherill says that the last time they entered was over 10 years ago and that lots of people have made a big effort tidying up and planting new areas. Did they win? You'll have to wait for the next edition!

## Knowle Green Garden Festival

The hamlet of Knowle Green, straddling the southern boundary of the AONB, has a great community spirit and a very well used village hall. They have a garden festival where villagers open up their gardens for a weekend every other year. This year was particularly nerve-wracking for gardeners who had nothing but driving wind and rain to contend with for weeks prior to the 7th and 8th July. Mercifully the weather was mostly dry with some blue sky and sunshine. The community uses the garden festival to generate funds for other projects within the village and this year they wanted to contribute towards the costs of restoring the graveyard. They successfully applied for a BTEF grant to help with the printing of posters and flyers and generally to promote the festival to a wider audience.

Bowland Tourism Environment Fund is made available to small local projects, which will benefit tourism and the local environment. Businesses, individuals and organisations can apply for up to £500.

If you want to apply for a grant then visit [www.ribblevalley.gov.uk](http://www.ribblevalley.gov.uk) and search for 'BTEF', or go to the Forest of Bowland website. Grants are available for projects throughout the AONB area.



## Join our Business Network

Over 40 businesses have now joined the Forest of Bowland Sustainable Tourism Network making a commitment to sustainable tourism in the AONB. As a member you will be given access to dedicated web pages, why not have a look at the type of resources available at [www.forestofbowland.com/BusinessNetwork](http://www.forestofbowland.com/BusinessNetwork).

**FOREST OF BOWLAND**  
Area of Outstanding Natural Beauty

**SUSTAINABLE TOURISM NETWORK**



The first Network meeting was held at the end of May, and was hosted by David and Hannah Davies at their home and art gallery at Maiden Bridge on Tatham Fell. Nearly thirty members attended and heard presentations from Andy Stansfield on 'How to write a Press Release' and Jon Beavan on the Memory Map software for making bespoke local maps.

If you are interested in joining the Network or would like further information, please contact Mike Pugh.

## Sustainable Tourism Network meeting

Wednesday September 5th 6.30pm, Lower Gill Holiday Cottages, Tosside.

For further details please visit

[http://www.forestofbowland.com/BusinessNetwork/bn\\_meeting.asp](http://www.forestofbowland.com/BusinessNetwork/bn_meeting.asp) or to book a place contact Mike Pugh.

## Businesses go green!

Following the launch at our sustainable Tourism Conference in January and the training seminars in March, there are now 22 businesses taking part in the Green Tourism Business Scheme (GTBS) in Bowland. These include a village hall, a cycle hire business, restaurants, teashops, and self-catering and serviced accommodation. The scheme has involved an advisory visit to each business giving recommendations on how they can strengthen their 'green' operations. These improvements will not only be aimed at reducing the carbon footprint, but also in cost savings to improve the profitability of the enterprise. In the late summer, the businesses will be assessed for Gold, Silver or Bronze Awards. His Grace, the Duke of Westminster, has agreed to present these Awards at a ceremony in the new Over Wyresdale Parish Hall on November 15th. Look out for how the businesses got on in the next edition.

## Free training

At the recent Network meeting we also launched a training needs survey. This has produced numerous responses with a strong call for marketing training as well as information about green tourism and familiarisation days around the AONB. Based on this interest we have put together a training programme. Please complete the form enclosed and return it to us by the end August, or book on line at

<http://www.forestofbowland.com/BusinessNetwork/training.asp>

## New publications



Enclosed with this newsletter you should find three new leaflets: 'Welcome to Bentham - a gateway to the Forest of Bowland AONB' this leaflet has been produced as a pilot scheme for a 'gateway town'. Over 20 businesses worked together to produce this leaflet to encourage visitors to visit the town, stay a while and support local traders. 'Welcome to Wyresdale Wheels for All' this leaflet does a similar job for the Scorton area, whilst also promoting the new Trampler vehicle they have purchased to enable visitors with mobility problems to explore the lanes and trails of Scorton. We have also just published a 'Good Visitor' postcard, which encourages tourists to behave more sustainably when visiting the AONB - why not hand some out to your customers?

We are steadily building up our range of publicity materials, and hopefully you will see them in shops and cafes as you travel around Bowland. Leaflets in production at the

moment are a fishing leaflet and village leaflets for Chipping and Bolton-by-Bowland, which will be available next month.

We have also produced bedroom browsers and leaflet racks to help Network members to better display their leaflets - another reason to join the Network! The browser is a file of information for visitors to help them find out more about the area when they come to stay in the AONB. The wooden leaflet racks have been produced for us by Penny Productions and are a beautiful way to display our publications. For further information contact Mike Pugh

## Ordering leaflets

If you are a BTEF host or a Network member you can order Forest of Bowland leaflets, BTEF pin-badges and postcards from Brochurelink.

If you are using e-mail go to [www.brochurelink.net/orders](http://www.brochurelink.net/orders), using your contact ID and password to enter the order page. If you have lost or forgotten your ID and/or password, e-mail [admin@brochurelink.net](mailto:admin@brochurelink.net) and ask for a replacement. If you are ordering by post, you should have received a paper order form - use this to re-order. If you have lost this, please phone **0151 653 8494** for a new one.

## Website update

Have you visited the Forest of Bowland website recently? It is a useful place to direct your visitors for information about events, local produce, wildlife and activities for quiet enjoyment. Our walking section is continually being updated, all the walks are designed to be easily downloadable and printable; also look at the new bridleway route available.

[http://www.forestofbowland.com/wrc/wrc\\_walk\\_intro.asp](http://www.forestofbowland.com/wrc/wrc_walk_intro.asp)

Next month look out for a selection of new Trampler Trails, plus walks which link to public transport, to encourage visitors to leave their cars at home!

# Bowland in Focus

## Maiden Bridge, Tatham

Many artists have a dream to control their own environment but when David and Hannah Davies discovered a traditional farmstead located high in the beautiful Bowland Fells with extensive views over the Lune Valley, they knew that they could make this vision a reality. And so began the story of Maiden Bridge...

Here on this ancient site ('mai dunn' is Celtic for 'great hill') David and Hannah Davies have created their own stronghold, not only in their physical development of the buildings and surrounding landscape but also in a partnership project which has created both a unique exhibition space and a multifaceted business promoting the arts and design.

When they discovered Maiden Bridge in 1988 they instantly realised its potential for development. Although the main house had been sympathetically retained, the opportunity to renovate two additional barns and a cottage offered exciting possibilities. Together the couple set about restoring the collection of buildings around the cobbled courtyard, systematically developing their own living/work spaces, exhibition areas and also the surrounding five acres of land.

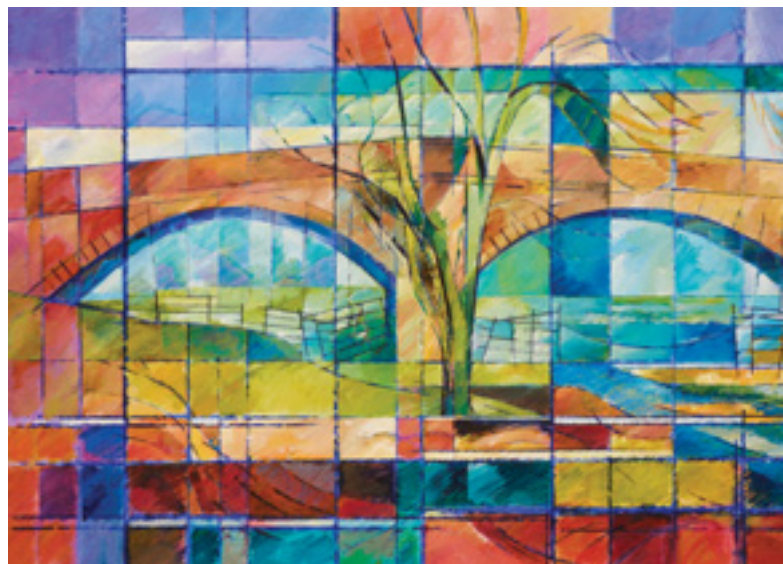
Maiden Bridge promotes the use of its buildings and facilities through lively interaction and involvement with the local community. It frequently hosts open days for local institutions. Both David and Hannah are very committed to making the arts accessible to young people and feel that Maiden Bridge should reflect their desire to heighten aesthetic awareness in everyday living. This commitment is further supported by the encouragement of collaborative projects, Facing North being an example. Facing North is an exhibition partly supported by the Forest of Bowland AONB's sustainable tourism project to be held September 12 - October 14, featuring Bowland themed artwork by 50 professional artists and the children of Tatham primary school. For further details please visit [http://www.forestofbowland.co.uk/news\\_events.asp](http://www.forestofbowland.co.uk/news_events.asp)

In 2005 the Maiden Bridge contribution to tourism and achievement in environmental sustainability was given the accolade of a Green Tourism award. The land at Maiden Bridge has been accorded the status of "site of special scientific interest". The creation of wildlife meadows and a diverse wildlife habitat planted with over six hundred trees of native and foreign species has contributed to the special nature of Maiden Bridge.

For more information about Maiden Bridge please visit <http://www.maidenbridge.co.uk/>



Maiden Bridge by Rosemary Morison



Slaidburn bridge by Anne Thornhill

This business is being funded by the AONB's sustainable tourism project. If you have an idea for a sustainable tourism project and need some assistance, please contact Cathy Hopley or Mike Pugh.

### Image Credits

Lancashire County Council P1 & P3, Charlie Hedley, Countryside Agency P2 & P6, James Moorcroft P5, Martin Charlesworth, Forest of Bowland AONB, P4 & P5, Anne Thornhill & Rosemary Morison P8.